

**MOTORISED LASER POWER
ATTENUATOR - LPA**

PRODUCT ID:

S/N:

LPA**LPA1901028****PRODUCT SPECIFICATIONS**Attenuation range: <0.1 % to >98 %
Coating: 515-532 nmInput CA: Ø18 mm
Output CA: Ø18 mm**Wavefront distortion measurement***

*measured with ZYGO Verifire XPZ interferometer at 633 nm

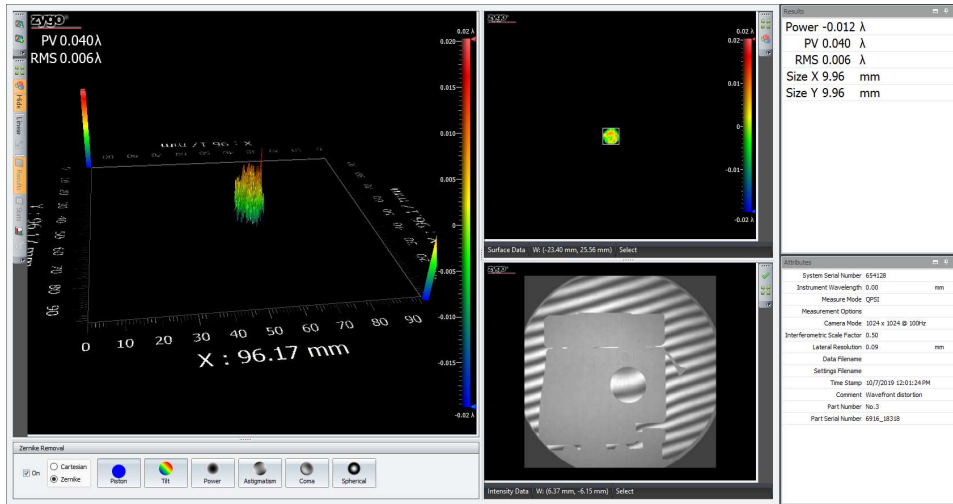
RESULTS:

Beam size	Result	Standard
Ø 10 mm	$\lambda/25$ - p-pol $\lambda/25$ - s-pol	< $\lambda/15$
Ø 12 mm	$\lambda/16$ - p-pol $\lambda/16$ - s-pol	< $\lambda/10$
Ø 14 mm	$\lambda/13$ - p-pol $\lambda/13$ - s-pol	< $\lambda/8$
Ø 16 mm	$\lambda/10$ - p-pol $\lambda/10$ - s-pol	< $\lambda/6$
Ø 17.5 mm	$\lambda/8$ - p-pol $\lambda/8$ - s-pol	< $\lambda/4$



Configuration: 10 mm input

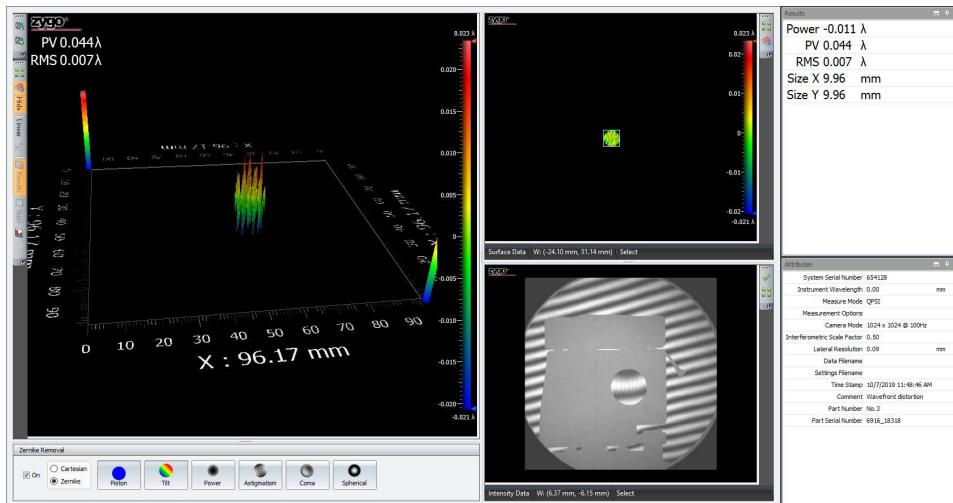
$\lambda/25$ - p-pol
 $\lambda/25$ - s-pol



Monday, October 7, 2019

margarita

1/1



Monday, October 7, 2019

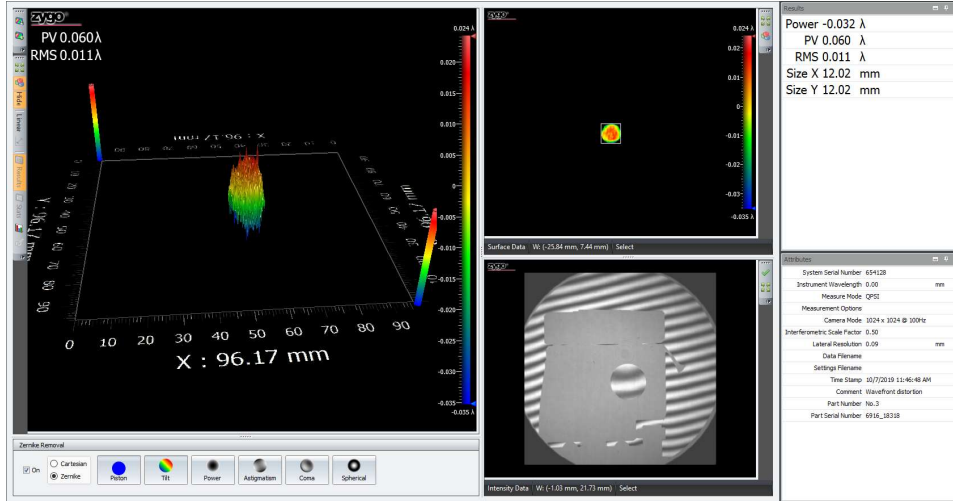
margarita

1/1



Configuration: 12 mm input

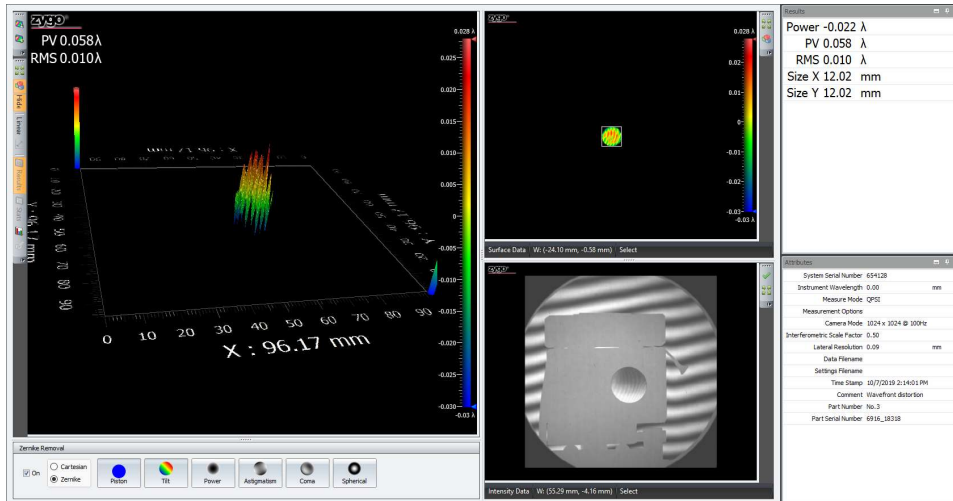
$\lambda/16$ - p-pol
 $\lambda/16$ - s-pol



Monday, October 7, 2019

margarita

1/1



Monday, October 7, 2019

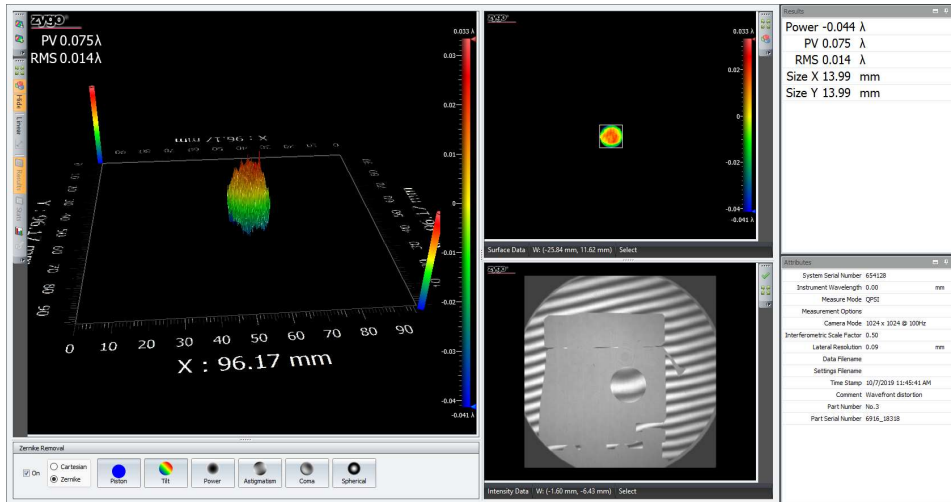
margarita

1/1



Configuration: 14 mm input

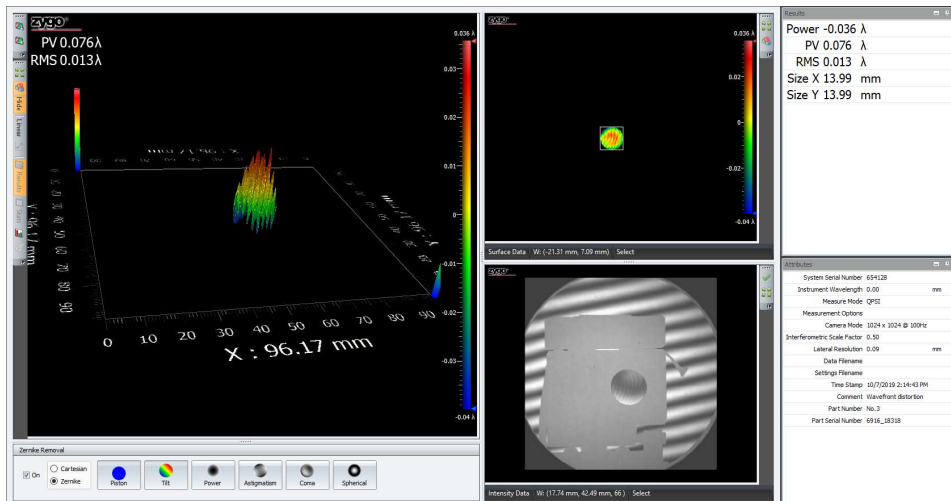
$\lambda/13$ - p-pol
 $\lambda/13$ - s-pol



Monday, October 7, 2019

margarita

1/1



Monday, October 7, 2019

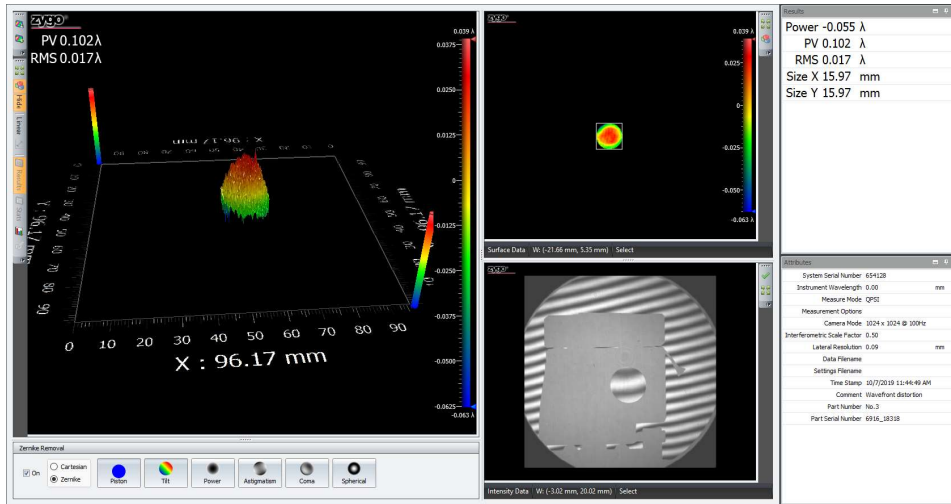
margarita

1/1



Configuration: 16 mm input

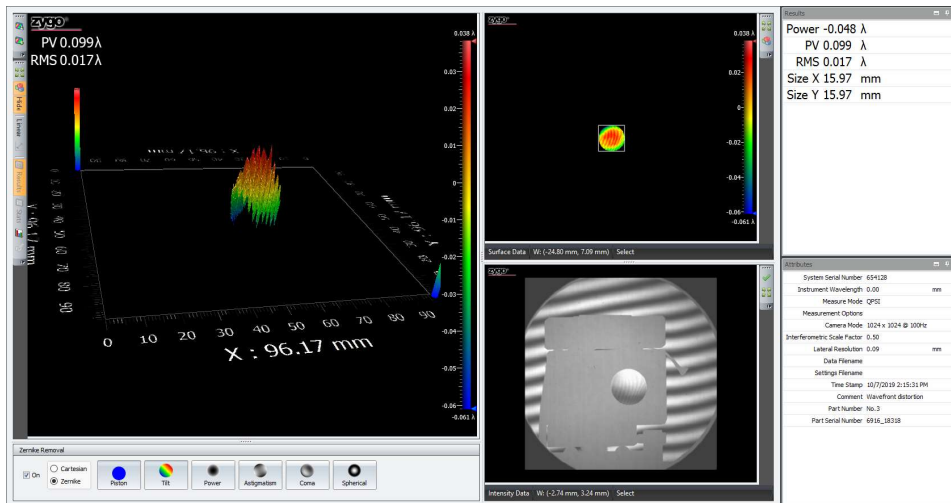
$\lambda/10$ - p-pol
 $\lambda/10$ - s-pol



Monday, October 7, 2019

margarita

1/1



Monday, October 7, 2019

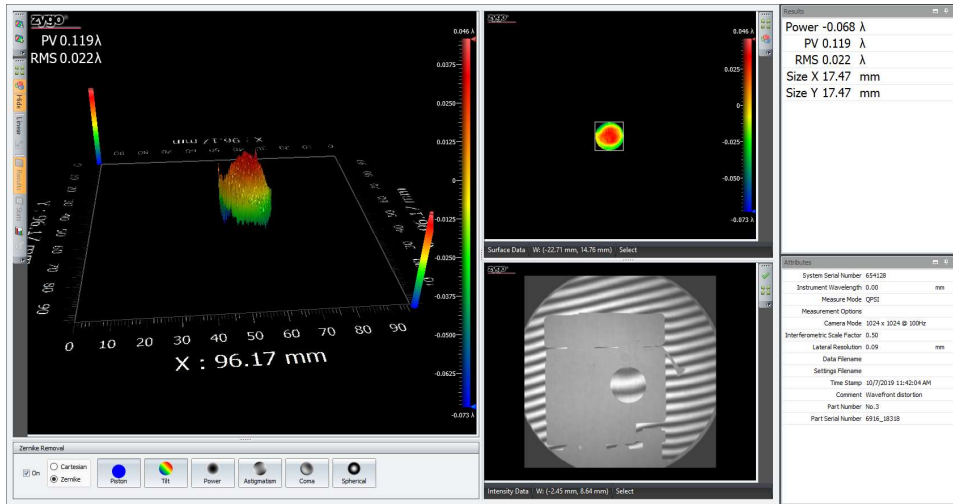
margarita

1/1



Configuration: 17.5 mm input

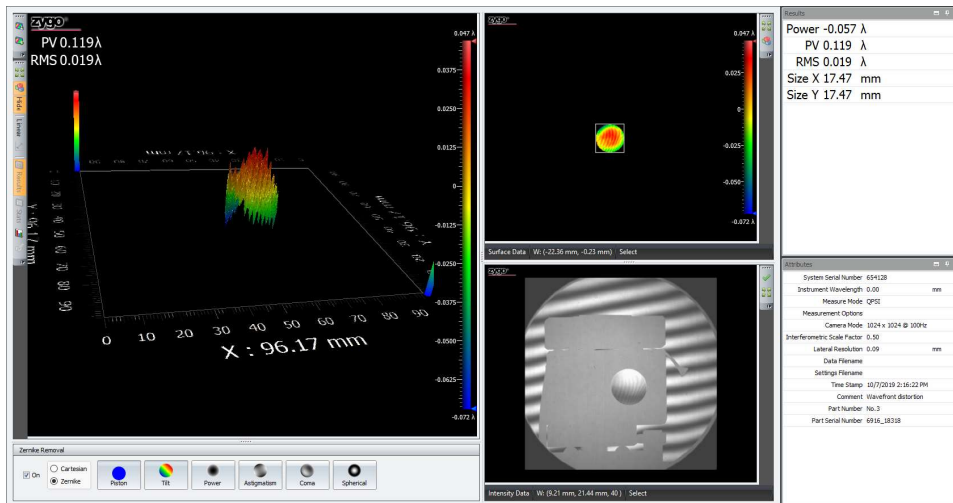
$\lambda/8$ - p-pol
 $\lambda/8$ - s-pol



Monday, October 7, 2019

margarita

1/1



Monday, October 7, 2019

margarita

1/1